

Company Profile

Discover REALSOFT, the company which strives to pull together a diversity of silos, technologies and businesses to accompany a successful way forward. Every day we enrich our experience and knowledge towards the wider community. It is our philosophy as business technologists that make business sense.





A LONG HISTORY, IN SHORT

WE BECAME A POINT OF DIFFERENCE.

REALSOFT began life in 2002 with a registered branch office in Oman. REALSOFT started as a small business in the field of programming solutions, as REALSOFT continued to grow bigger and more experienced in the data management field, it has accelerated the growth of business and depth of support in the field of programming solutions and system integrations.

REALSOFT now represents a huge milestone in the data management field in the region, combined with professionalism and high quality. A combo that sums years of experience, hard work, and dedication all together.

WHO ARE WE ?

“

“We also thank REALSOFT Advanced Applications, one of the national companies that we cherish and are proud of, which carried out the work the best way possible and was cooperative in fulfilling all the terms of reference put by the Department of Statistics and the Special Tenders Committee”

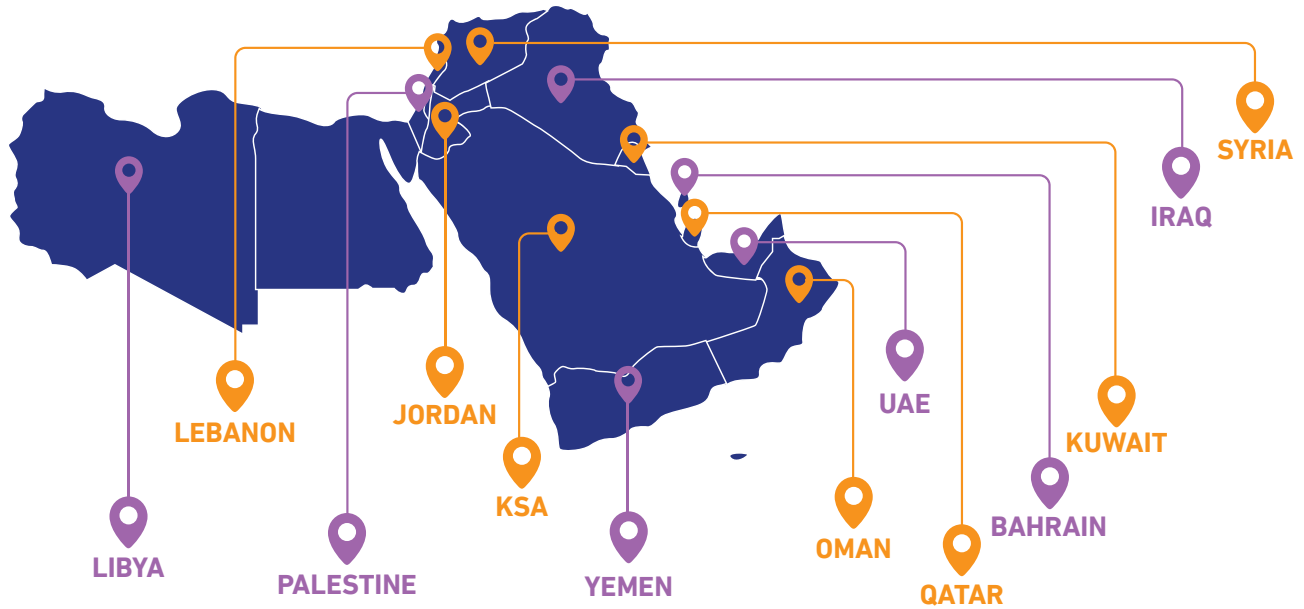
Jordanian Statistics Results Inauguration Ceremony

Dr. Qasem Al Zoubi Director General of DoS

”

WHO ARE WE ?

REALSOFT Advanced Applications works in 12 countries and operates on a diverse area of expertise.



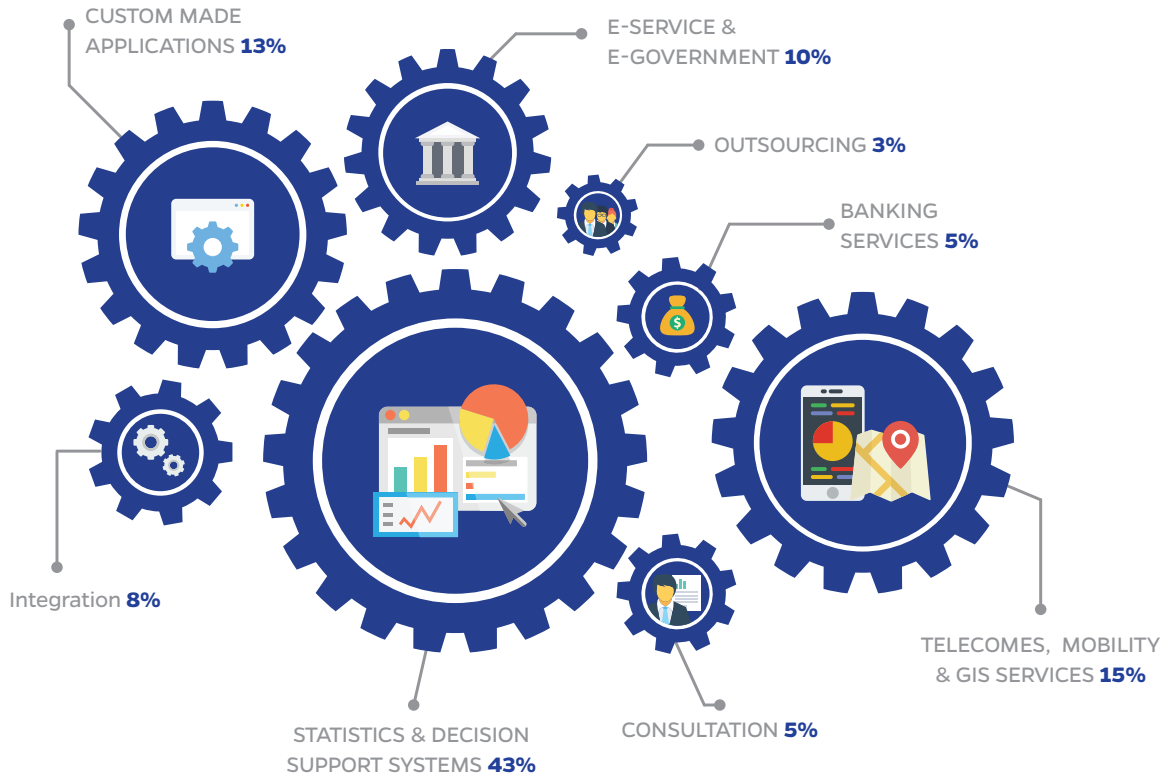


OUR PHILOSOPHY

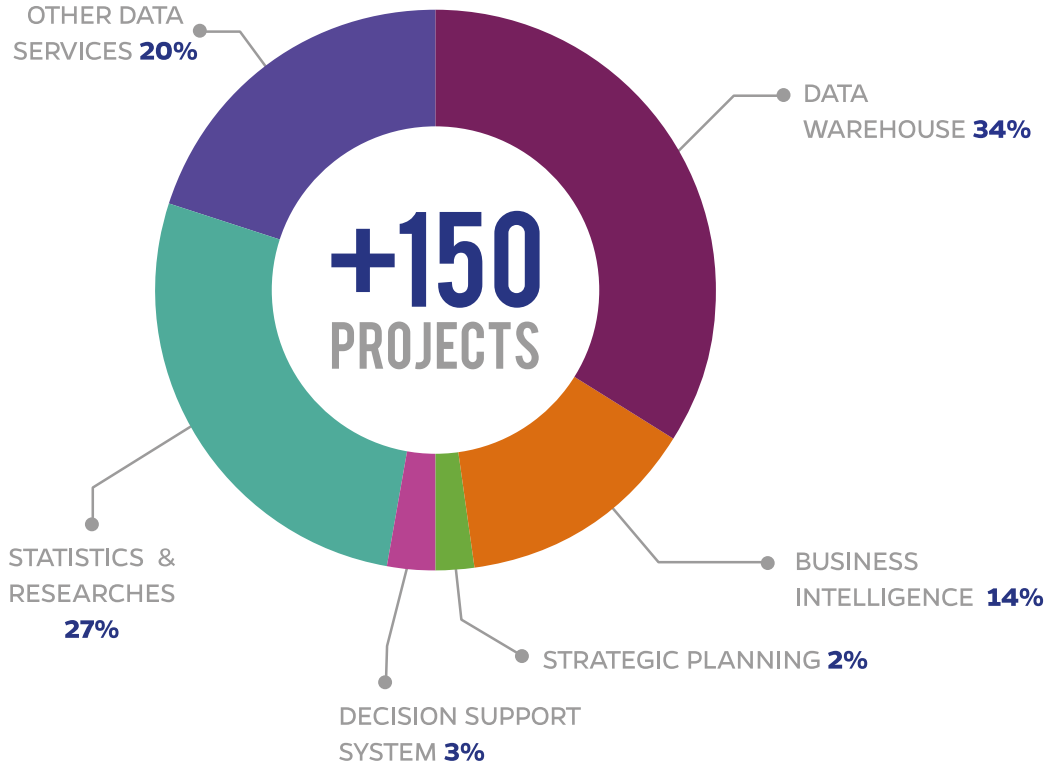
“ A D D N E W V A L U E ”

simple words to show our unchanging principles and promising values to which we will always be dedicated. We in REALSOFT with our dedication and hard work are aspired to be a regional leader in enterprise-wide state-of-the-art software solutions with commitment to our clients' satisfaction.

PORTFOLIO BY DOMAINS



OUR FOCUS



CAN WE HELP YOU ?

LET US TELL YOU 2 THINGS.

WE CAN HELP YOU.

1st **THING.**

REALSOFT has been a long-term trusted partner for governments, municipalities business and NGOs in the ME region since 2002; working closely with our clients allows us to act in their best interest over the long term. We have a proven range of combined technical knowledge and experience, timely response, and cost efficient services.

HOW WE CAN HELP YOU.

2nd **THING.**

Once you embark on a new project whether big or small, it's absolutely normal to feel burdened and overwhelmed with the responsibility it carries, as you start to doubt every aspect and every detail, ...

Can I succeed with a fine quality and reasonable budget for this solution ?

Will this project achieve an added value ?

Will my project receive thumbs up or thumbs down ?

These pressures can make a simple renovation, a daunting task, but REALSOFT wants to assure that our experienced and skillful teams are resourced appropriately for the ultimate benefit of our clients, with our high standards and strong sense of responsibility, we achieved a long list of innovation and acknowledged successes and we are willing to make this list grow longer.



CAN WE HELP YOU ?



STATISTICAL SOLUTIONS

Leading a modern trend in statistical solutions, REALSOFT innovation took over and made the long, and stressful statistical process, an easy and more effective process. Integrating the latest technologies including data visualization and dissemination tools (e.g. GIS representation), data capturing, tracking through GPS and GIS, and getting rid of paperwork to fit in response to our client's high expectations. REALSOFT statistical experience varies between demographical, tourism, economic, and agricultural solutions.



BI & DW

Alongside a comprehensive set of Data warehousing and Business Intelligence services, our people in REALSOFT own an extensive experience in the implementation of enterprise data warehousing, Data Mining, Data integration, Data Synchronization, and many other data services. A wide range of solutions that cover ministries, health and government institutions' needs.



INSPECTION SOLUTIONS

REALSOFT inspection solutions, vary between specialist systems for tourism, labor, buildings, food safety, and violations inspection software. An integration of customizable solutions based on digital maps and can accommodate customer's particular preferences and expectations. These solutions can be either desktop applications or mobile applications.

CAN WE HELP YOU ?



E-SERVICES & E-GOVERNMENT

Acknowledged as a trusted partner for the different governments in the ME region, REALSOFT has provided several solutions for governmental agencies utilizing modern approaches, and accompanying a wide experience in the design, development, implementation and support of E-services based on the state-of-the-art Service Oriented Architecture (SOA) paradigm.



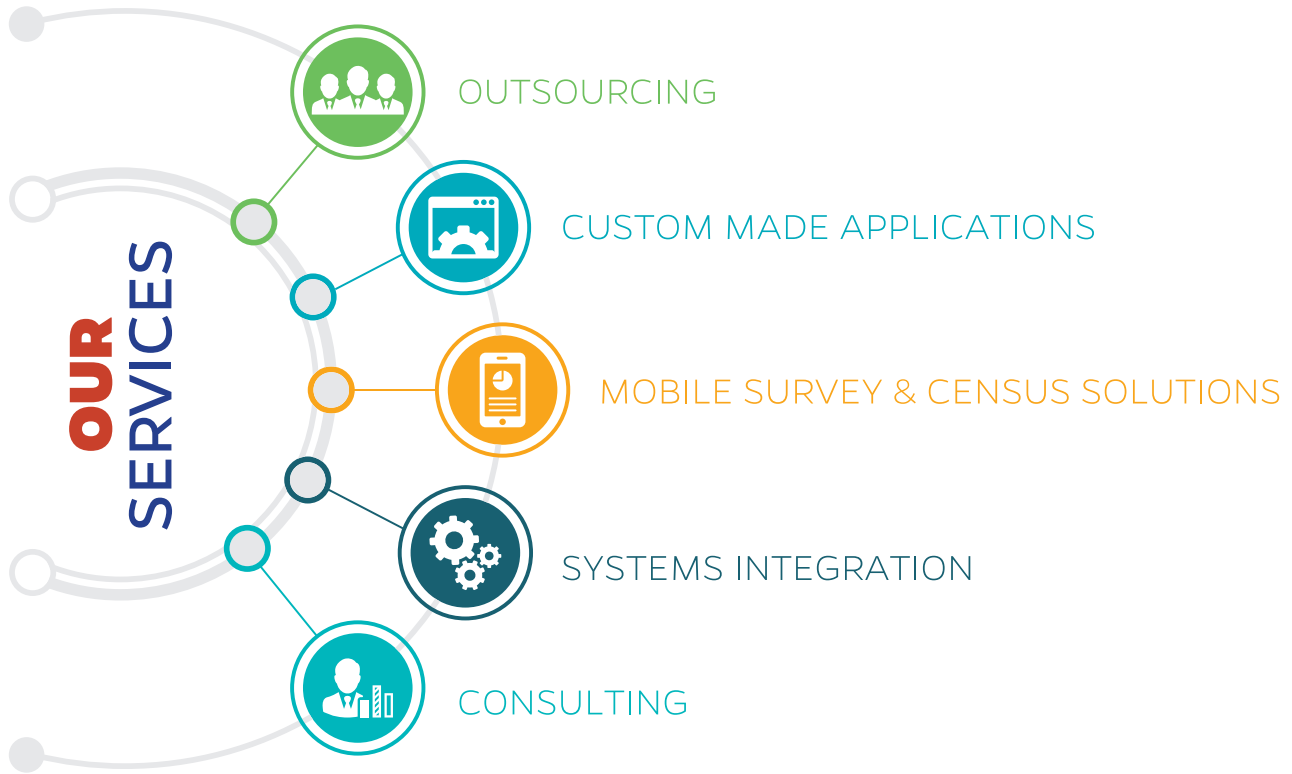
MOBILE APPLICATIONS & SOLUTIONS

Ever since developing the world's first PDA based Population and Dwelling Census for the Sultanate of Oman in 2003, REALSOFT and MobiSoft have successfully endeavored into various verticals including Census and Surveys, Municipal, Sales and Retail, Marketing, Inspections and GIS. With utilized synchronization, digital maps, and other modern technologies, REALSOFT aims to develop the best innovations.



BANKING SOLUTIONS

In order to satisfy the increasing demand of modern banking services, REALSOFT opted to enhance procedures and optimize the steps required to facilitate the banking services and has capitalized on its wide spectrum of skills and offered its solutions to the banking sector and delivered systems using cutting-edge technologies in developing banking solutions for financial compliance (classification and provisioning of impaired facilities), returned cheques, registries systems, loyalty redemption, online bills payment, middleware integration, decision support systems and others auxiliary systems.



OUR SERVICES

WE ARE CONTINUALLY DEVELOPING LEADING EDGE SOLUTIONS AND BUSINESS-CRITICAL IT SERVICES TO TECHNOLOGIES.



OUTSOURCING FOCUSING ON COMPETENCIES INSTEAD OF IT INFRASTRUCTURE.

Our experts pride themselves by working with clients to transfer their expertise as well as ensuring their solutions to meet the clients' needs.

With a wide client base of customers from different countries, REALSOFT can boast an in-depth knowledge of the latest developments in data warehousing (DW), business intelligence (BI), databases and application development and understanding of the wider context in which we work.

REALSOFT IT OUTSOURCING SERVICES INCLUDE:

- BI & DW modeling and development.
- ETL services.
- IT Consulting Services
- Requirements Study
- Statistical systems.
- Technology Infrastructure
- Software Consulting
- Software Programming



CUSTOM MADE APPLICATIONS FREEING YOUR IDEAS AND HELP YOU MEET YOUR BUSINESS NEEDS THROUGH COSTUMED APPLICATIONS.

Our teams in REALSOFT thrive to build custom made applications to help meet the specific requirements of the clients and save their time and money. Through the use of highly advanced IT technologies, we carefully analyze the needs of the client so that we will be able to commend the optimal solution according to deadlines, assets and functions requirement implementation.

OUR SERVICES



MOBILE SURVEY & CENSUS SOLUTIONS **TRANSFORMING PILES OF PAPER INTO DIGITIZED SOLUTIONS.**

REALSOFT pioneers this niche market regionally and internationally. We were the first company ever to deliver paperless census solution based on Personal Digital Assistants (PDA).

- *Mobile based survey solutions.*
- *Online wireless synchronization with back office database and systems using 4G/3G/GPRS.*
- *Offline data capturing in case wireless connection is not available.*
- *Integrating services to populate operation data stores and data warehouses with integrated and clean data.*



SYSTEMS INTEGRATION **ONE SOLUTION FOR ALL.**

Our teams in REALSOFT gained a solid experience in integrating Oracle environment with others platforms, a huge effort is put in the process of integrating the many applications into one complete solution ready to run on every platform easily and with no interjection or interference or conflicts.

- *Seamless integration with MQSeries.*
- *Transparent Reading and Generating XML directly with Oracle DB.*
- *Utilize SQL Server Integration Services (SSIS) for Data Warehousing & Data Integration.*
- *Transparent Oracle Database integration with Mail Servers.*
- *Transparent Database integration with TCP services.*
- *Publish and Consume Web Services.*
- *Exposing Flat files, Excel sheets and other ODBC compliant data source to Oracle SQL using heterogeneous services.*
- *Oracle Integration with IBM DB400 through DRDA.*

OUR SERVICES



CONSULTING

CAPTURING VALUE ACROSS BOUNDARIES & DELIVER QUALITY & PERFORMANCE THROUGH OUR MASTERY OF BUSINESS TECHNOLOGIES.

REALSOFT consulting team makes the best decisions to move your business forward with confidence, by harnessing the value of modern technologies, and providing business insight. We minimize the risks and get the best out of a new project before turning it to a bespoke solution. Our consulting services spans many technologies and IT services. Our constant endeavor is to enable our clients to utilize latest technologies and following industry best practices for building robust applications.



OUR PRODUCTS

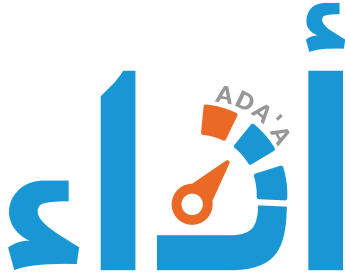


إدارة ومتابعة الأعمال الإحصائية
Management & Follow-Up Statistical Operations



AL-KHAWARIZMI
SURVEY PRODUCT

OUR PRODUCTS



إدارة ومتابعة الأعمال الإحصائية
Management & Follow-Up Statistical Operations

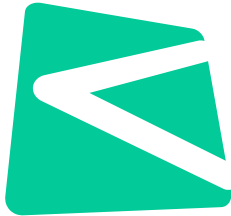
ADA'a is an integrated management system for managing and following up statistical operations. It uses the GSBPM (Ver. 5), the international standard for streamlining statistical production systems to produce official statistics.

ADAA provides a fully integrated dashboard and reporting engine, which contain data visualization and analytics capabilities to get insights into the statistical production processes.

Key Features, include:

- Top-down planning the statistical operations.
- Working with different departments across statistical products
- Support execution of statistical processes based on the international standard GSBPM
- Executive dashboards, Reports and KPI gauges
- Integration with other operation systems through web services
- Communication, notification and escalation
- Mobile Access (Android and iOS)

OUR PRODUCTS



Al-khwarizmi is the perfect software for capturing respondent's attentions, when it comes to creating the perfect survey. A personalized survey design & workflow brings a tailored & a unique experience the respondents. An efficient & automated survey experience for survey designers & respondents to collect replies anytime & anywhere – smartphones, tablets & desktops. Al-khwarizmi also integrates with call centers systems to collect data over the phones.

AL-KHAWARIZMI SURVEY PRODUCT

What differentiate al-khawrizmi from other products on the market, is its ability to handle big scale/complicated surveys, like populations, agriculture & socio-economic public surveys. The interrelations of questions groups & the integration with geo-spatial data & gis maps are a few key features in handling big scale surveys.

The software includes innovative & reporting analysis tools that are beneficial to the customers to gain more insights into the process behind the survey. Instant summary of survey results, dynamic & flexible reports with results visualization are a few key features in the data analysis & reporting.

The software has applied the highest possible standards related to security, so customers can be sure about data safety. A complete personalized software to manage the surveying process by adapting team roles, task assignments, data collection & transfer. The software runs in two ways – on premises & over the cloud.

PARTNERS

PARTNERSHIPS TO DELIVER SATISFACTION.

TECHNOLOGY



FUNCTIONAL



OUR EXPERIENCE

EFFORT BEARS MUCH FRUIT.

2019

Muscat Festival-Oman

NCSI Migration-Oman

Ras Al Khaimah - UAE

Health Insurance Department - Jordan

Social Security E-service - Jordan

2018

Aqarat Abu Dhabi - UAE

Economic Survey Sharjah -UAE

HIES -Oman

Masarat - Jordan

Map Update Sharjah -UAE

Miyahuna - Jordan

MOI E-services Mobile-Jordan

Taif DWH-KSA

2017

Jordan Elections

MOI E-services Platform - Jordan

SDMX Integration - Oman

Central statistical data warehouse Implementation & BI solution - Oman

Muscat Festival survey

(Masdar) National Statistics Data platform - KSA

GaSTAT Monitoring Statistical Operations - KSA

standard international trade classification - Jordan

Etihad Bank Business Intelligence - Jordan

Housing Bank system - Jordan

Insurance services Integration - Jordan

Sharjah Census

Palestine Refugee in Lebanon Census

Quality of Life Survey - UAE

Tahdeeth - UAE

Tabadul - UAE

Statistical Data related to Social Protection Survey - KSA

2016

Palestine Census

Ajman Census

Jordan Elections (2007/2010/2013)

Customs System Migration - Jordan

Consumer Price Index - Oman

Arab Bank - Jordan

2015

Jordan Census

Sharjah Census

Labor Force Survey II - KSA

Consumer Price Index - KSA

Registries System - Jordan

Integration with VISA,MasterCard Credit Card System - Jordan

OUR EXPERIENCE

2014

Returned Check System - Jordan

Credit Facilities Classification and Calculation of Impairment Provisions - Jordan

Multi Indicator Cluster Survey -Oman & Iraq

Writ Service and Notice System - Jordan

Human Resource Procedures Survey - Jordan

GSC DSS (Decision Support System) - Oman

Business Intelligence Consultation - KSA

E-Fawateercom System - Jordan

The Health Behavior Pattern Survey and the Multiple Statistical Systems Project - UAE

Oman Social Comprehensive Survey (CS)

2013

NewCore Banking Integration - Jordan

eFAWATEERcom Middleware - Jordan

GIS Inspection System - Qatar

Health & Safety Mobile Inspection - Qatar

Labor Inspections Phase 2 - KSA

Salala Autumn Festival Survey - Oman

Dynamic Mobile-based Survey - Oman

Oman Agriculture

Fish Landing Survey - Oman

Kingfish Monitoring Program - GCC Oman

Hajj Statistics - KSA

Labor Force Survey (LFS) I - KSA

Implementing a New Version from the BI System - KSA

Upgrade of Sehetna Portal - Jordan

Unfair Trade Alarm System (U.T.A) - Jordan

Data Warehousing & Data Modeling - Jordan

Building National Data bank (Data Warehouse) for the Kingdom Statistics - Jordan

Data Analysis and Dissemination System - Kuwait

Supply, Implementation, and Support of Software Packages for Comprehensive Demographic and Health Survey - UAE

2012

Check Digit System - Jordan

Returned Checks System - Jordan

TANMIAH: Implementing a Multi-Sectorial Decision Making Support Tool - Jordan

National Labour Market Data Warehouse and BI system - Phase 1 -KSA

Jordan Customs Data Warehousing & Business Intelligence System - KSA

Hajj Statistics - KSA

2011

Multi Indicator Cluster Survey - Qatar

Army Officers Management System - Jordan

Flexcube Reuters Integration - Jordan

Flexcube ECC Integration - Jordan

Sales and Income Tax Revamp - Jordan

Ministry of Labour Inspection System - Qatar

Labor Inspections Phase 1 -KSA

2010

Updating Buildings, Dwellings and Households Frames - UAE

Oman Census (Establishment, Dwelling and Population)

OUR EXPERIENCE

The General Population, Housing and Establishment Census - Oman

Private Sector Program (PSP) - Jordan

Social Information System
(Bahrain 2009/2010)

PDA based Private Sector Project for Women Health Survey (Jordan 2009/10)

Non-Profit Organization Management System
(Bahrain 2009/10)

Hotel Classification ICT System
(Jordan 2009/10)

2009

Municipal Inspection & Fining System - KSA

Tourism Establishments Classification System - Oman

Automated Field Inspections & Violations - Qatar

Tourism Establishments Classification System - Oman

Inbound/Outbound Survey - Oman

Salalah Autumn Survey - Oman

Dates Survey - Oman

Multi Purposes Survey - Oman

Fishing Violations System - Oman

Fishing Price Survey - Oman

Labor Force & Job Creation Survey - KSA

Private Sector Project for Women Health Survey (PSP) - Bahrain

2008

Parking Violation System - Jordan

Operational Data Store (ODS) - Risk View - Jordan

Jordan Customs BI Solution Phase I - Jordan

Higher Education BI System - Oman

Miyahuna Survey - Jordan

Consumer Price Index (CPI) - Jordan

Administration System - JEDCO, Jordan

Administration System - JUMP, Jordan

ETL System for Citizen Portal - Jordan

Oracle MQ Series Integration - Bahrain

Establishment Framework - Oman

Labor Force Survey (LFS) - Oman

Household Income and Expenditure Survey - Oman

Fire Department System - Portal, Kuwait

Fish Exports & Imports Survey - Oman

Tourism Establishments Classification and Survey System Upgrade - Oman

2007

Jordan Agricultural Census

Sufieleh Fish Survey - Oman

Fish Landing - Oman

m-Marketing Survey - Jordan

Ministry of Social Development Portal - Bahrain

Bahrain Army Portal - Bahrain

Unified E-Services - Citizen Services Center, Syria

Web System for Sundries, Certificates and Returned Checks - Jordan

Credit Facilities Classification and Calculation of Impairment Provisions - Jordan

OUR EXPERIENCE

2006

Consumer Price Index Upgrade - Oman

Tourism Establishments Classification System - Oman

Consumer Price Index (CPI) - Libya

Population Census - Libya

PDA Parking Reservation and Violation System through SMS - Pilot Project, Jordan

PDA Based Fisheries Survey - Oman

Tourism Establishments Classification System - Oman

2005

Population Census - Kuwait

Household & Housing Units Census - Kuwait

Parking Violation System - Oman

Boat Count - Oman

2004

Arrivals & Departure Survey - Oman

Oman Agricultural Census

PDA Parking Reservation and Violation System through SMS - Oman

Salala Festival Survey - Oman

2003

Social and Economic Indicators DB - Oman

Human Resources Development DSS - Jordan

E-Services for Social Funds - Jordan

PDA based Mobile Labor Force Safety Inspection - Qatar

Population Census - Oman

Consumer Price Index (CPI) - Oman

Rented Units - Oman

Household & Housing Units Census - Oman

Establishments Census - Oman

2002

Housing and Urban Development Information System - Jordan

OLAP Reporting Pilot Project - Oman

GTZ Project - Jordan

STATISTICAL CENSUS & SURVEY PROJECTS

+100 PROJECTS AND STILL COUNTING.

Since the very beginning, REALSOFT was the regional leader to draw a different outline and future for census and survey projects. In addition to the traditional way to collect statistical data, REALSOFT provides register based statistical systems and has provided statistical solutions for population, housing and agricultural censuses, socio-economic indicators, household income and expenditure, labor force survey, e-services for pension funds, social information systems, citizen services centers and social development portals.



A RELIABLE, PROFESSIONAL TEAM WITH THE EXPERIENCE YOU NEED

YOUNG, EXPERIENCED, AND INSPIRED.

REALSOFT now employs 100+ people operating in 7 countries and have partners in 5 other countries. From Architects, Techno-functional Experts, Quality Engineers and Operations team, Management, and others working together closely to ensure the highest levels of customer satisfaction in this high technology industry.

All our employees are well qualified, enthusiastic and are willing to invest all their experience in their work.

Our management team, has been together for over **FOURTEEN** years now. This provides comfort and confidence that the high standards for which we are sort are deeply ingrained as a part of our work culture.



POWERING BUSINESS WITH OUR SOLUTIONS.

If you seek:

True collaboration
with customers and
partners.

Complete
understanding of
customer's business.

Persistence in
finishing the job
whatever it takes.

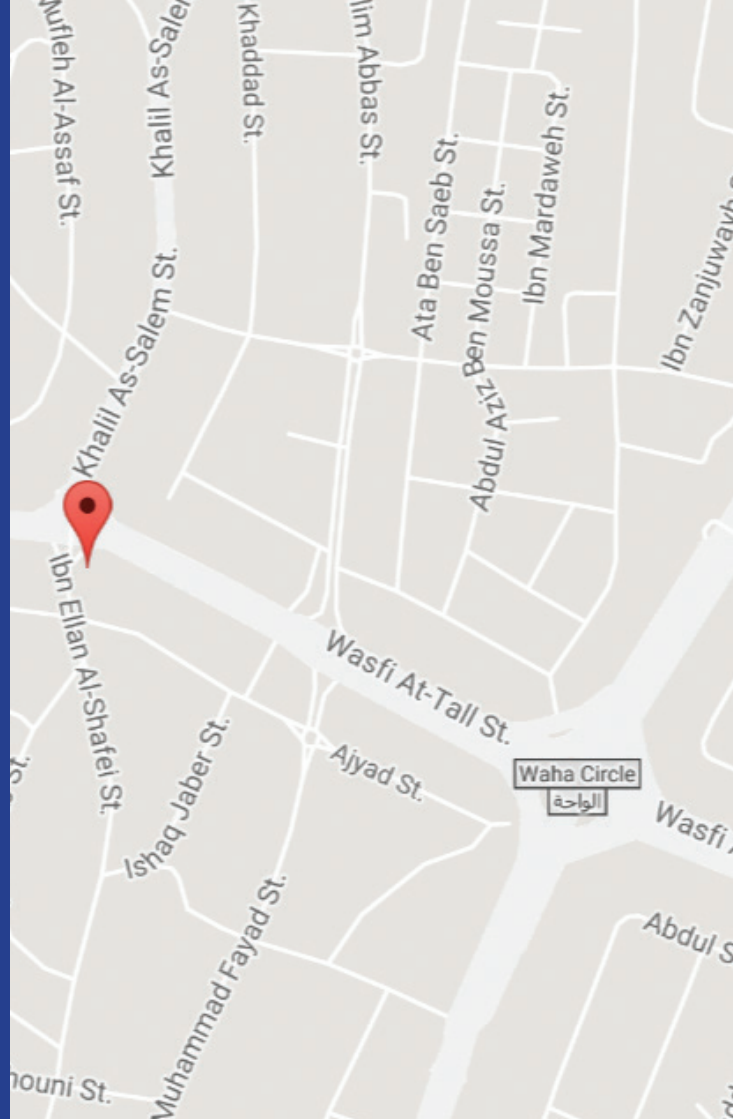
then you need to contact us now.

JORDAN

✉ P.O.BOX: 3105 Amman 11953 Jordan

☎ Tel. : +962 6 53 77 090
+962 6 53 77 091

☎ Fax : +962 6 53 77 092



FIND US



[Facebook.com/Realsoftme](https://www.facebook.com/Realsoftme)



[Twitter.com/Realsoftme](https://twitter.com/Realsoftme)



[Linkedin.com/company/Realsoftme](https://www.linkedin.com/company/Realsoftme)



[REALSOFT.ME](https://realsoft.me)