

CENSUS IN ALL ITS GLORY

ARE YOU WORRIED ABOUT HOW TO CHOOSE THE APPROPRIATE TECHNOLOGY FOR YOUR CENSUS ?

AND HOW TO MAINTAIN CONFIDENTIALITY OF DATA AND INTEGRITY OF OPERATIONS ?

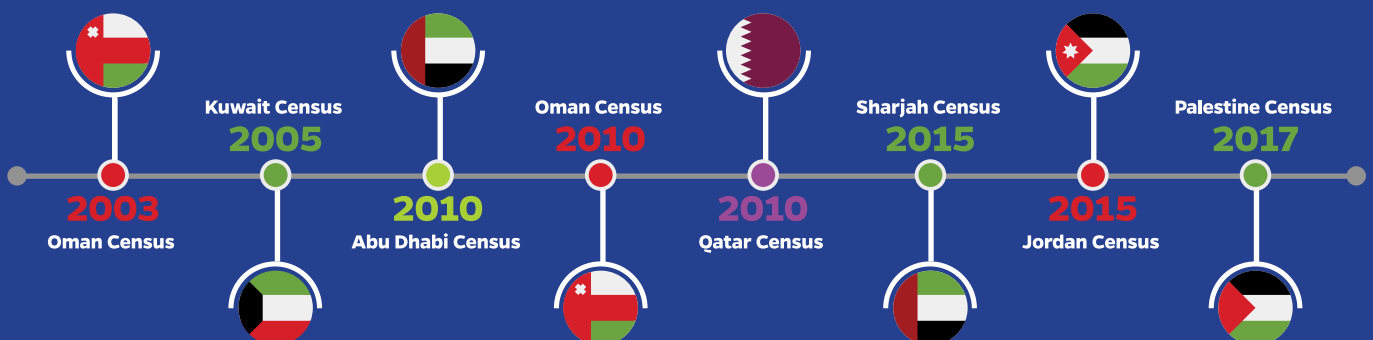
ARE YOU ATTEMPTING TO BRING INNOVATION TO YOUR CENSUS AND STATISTICAL OPERATIONS ?



THROUGH REALSOFT CENSUS PACKAGE, YOU WILL BE ABLE TO FULLY AUTOMATE YOUR CENSUS OPERATIONS, CREATE INNOVATION, AND IMPROVE YOUR DATA QUALITY, FIELD WORK TIME AND TECHNIQUES, AND MOST IMPORTANTLY, THE ACCURACY OF DISSEMINATED RESULTS IN RECORD TIME.

"We Will Do It!"

IS OUR PROMISE TO YOU



REALSOFT CENSUS PACKAGE



DATA COLLECTION MOBILE APPLICATION

Mobile based application for data collection running over smartphones, handhelds and tablets, cross OS (Windows10, iOS and Android). The application is greatly enhanced by the use of GIS and Geospatial technologies where surveyors are guided to their collection work areas through receiving specific tasks located clearly on maps.



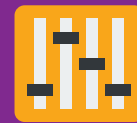
FIELD SUPERVISION & MANAGEMENT APPLICATION

A mobile application used by supervisors for data quality and field work progress control and follow up. The application allows supervisors to keep track of surveyors' performance and accomplishments over maps, and provides interactive mode for data exchange to create a communication loop between supervisors and surveyors for all aspects related to data collection and task assignment.



INTERNET CENSUS (I-CENSUS)

A web secure application designed to serve households that opt to fill their information online. It is a user friendly, dynamic and step-by-step wizard like interface.



OPERATIONS ROOM APPLICATION

A web application for census planning, management, and reporting. It stands on utilizing maps and GIS technologies to identify, and assign tasks to surveyors. The application consists of two main components: The Productivity and Performance Reporting app and the Field Work Management app.



DATA QUALITY CALL CENTER (DQCC)

A web application to monitor and evaluate the data quality through providing advance query and search techniques. It employs a state-of-art technology to interact with households through addressing their notes received out of phone calls.



DATA PROCESSING & CODING

A web application created to post coding and data processing through data reviewing, enhanced business rules checking and long list/complicated lists coding.



BUSINESS INTELLIGENCE (BI)

An extensive reporting application that provides the census administration with the wealth information about progress, achievements, and other important indicators moment-by-moment from the first census day till the last. Authorized personnel can easily design dashboards, generate static and dynamic reports, and display others over maps.



DATA DISSEMINATION & REPORTING

A reporting application designed for final data dissemination, where authorized personnel can extract static, and dynamic reports about population distributions, percentages and other important final indicators. Besides, the application provides techniques to display and disseminate results on maps over different administration levels.