

REALSOFT

ADVANCED APPLICATIONS

Makes Business Sense

Enabling Geographic Information System Technologies

Helping people make better decisions

Over the years REALSOFT has realized the importance of the role that GIS can play in many different business domains and henceforth GIS enabled its solutions to become on the forefront of cutting edge technology in information analysis.

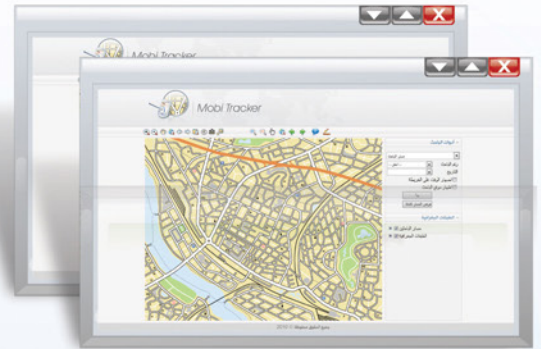
PDA Navigation

REALSOFT provides a rich set of tools that seamlessly integrate with several PDA based applications, like Sales Force Automation, Census Survey, Field Inspection, etc. Such tools allow for handy GIS functionalities on the go, for example querying, editing and navigation. Users can identify objects within allocated areas and avoid overlap with other users' areas. Users can utilize built-in GPS technology readily available in most modern PDAs for direct grid reference. Location based services become reality and routing optimization is provided. Management could monitor surveyors or completely restructure the data collection process (online/offline).



Tracking Enabled Solutions

As a by-product of our utilization of modern PDA devices coupled with the availability of GPS & GPRS, REALSOFT offers field worker tracking features either in online or offline mode. Tracking is then superimposed on GIS maps to give managers and team leaders a real overview of the team performance & efficiency.



Business Intelligence on the Map

Traditional business intelligence reporting is disseminated through tabular reports, graphs and dashboards elements. However REALSOFT believe that visualization of data gives management a whole new dimension of knowledge that definitely enhance the decision making process. REALSOFT integrates Business Intelligence (BI) and GIS to provide innovative solutions that leverage the synergy of these two technologies. With such solutions, management can display data with a geographic dimension or location on a map (show point-based information, zoom, pan and drill to additional map details) while at the same time interacting with other dashboards elements.

